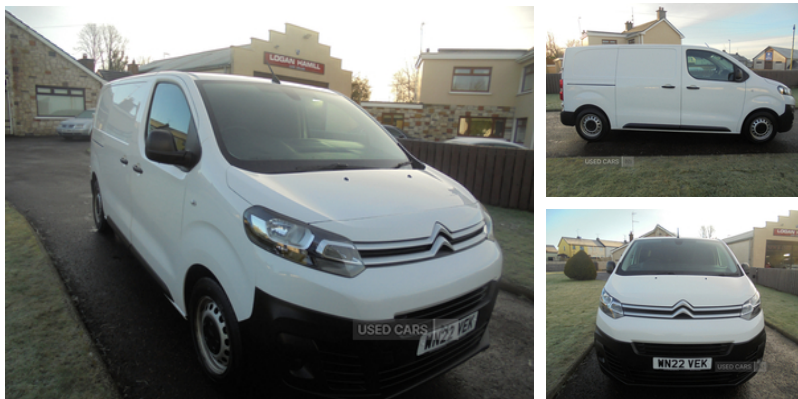


## Citroen Dispatch 1000 1.5 BlueHDi 100 Van Enterprise Pro | 2022

**£11,950** + VAT



### Vehicle Features

2 speed intermittent front wipers, 6 load tie-down hooks in cargo area, 12V socket in cabin, 12V socket in cargo area, Acoustic vehicle alerting system, Automatic fuel cut off & door unlocking, Battery charge warning, Black door mirrors, Closed upper and open lower gloveboxes, Cup holders for driver and passenger in top of dashboard, Dashboard mounted central locking push button and auto locking above 7mph, Dashboard storage areas, Door opening warning and audible lights on warning, Driver and passenger sun visors, EBA and EBFD, Electric front windows with one touch & anti pinch function, Electronic Stability Control and ABS with hill start assist, folding table in central seat, foldup outer seat, Front door pockets with 1.5L bottle holder, Front windows tinted to 30 percentage opacity, Handbrake grip + gaiter in leather, Hard plastic floor protection in cabin, Height-adjustable 3-point pre-tensioner seat belts with force limiter, Height adj drivers seat with lumbar adj & armrest, Height adjustable halogen headlights, Height adjustable head restraints for driver and front passengers seats, Height and reach adjustable steering wheel, High level third brake light, Laminated acoustic windscreen, Large courtesy lights, Load compartment interior light, Map reading lights in roof console, Mica cloth/Vinyl upholstery, Moduwork - Dual passenger seat, Multi-function on-board trip computer, Oil level warning light, Outside temperature gauge, PAS, Perimeter and volumetric thatcham category 1 approved alarm, Preparation for towbar-wiring and connector for towbar interface, Remote central locking with deadlocking, Remote temperature pre-conditioning, Rev counter with maintenance and gear efficiency indicators (GEI), Reversing lights, Rolling code transponder immobiliser, selective cab and load area locking via 3 button plip remote control key, Side indicator warning, Speedometer with digital odometer and digital trip recorder, Storage under squab of central passenger seat, Temp spare wheel, Twin rear headrests, Twin sliding side doors, under seat storage, Unfastened seat belt warning for driver and front passengers, Visibility Pack with

**Miles:** 52653

**Fuel Type:** Diesel

**Transmission:** Manual

**Colour:** White

**Engine Size:** 1500

**CO2 Emission:** 174

**Tax Band:**  
Light goods vehicle (£345 p/a)

**Body Style:** Van

**Reg:** WN22VEK

### Technical Specs

#### DIMENSIONS

**Length:** 4959mm

**Width:** 1920mm

**Height:** 1899mm

**Seats:** 3

**Luggage Capacity (Seats Up):**

Not AvailableL

**Gross Weight:** 2695KG

#### PERFORMANCE & ECONOMY

**Fuel Consum. (Urban Cold):** 54.3MPG

**Fuel Consum. (Extra Urban):** 76.4MPG

**Fuel Consum. (Combined):** 45.6MPG

**Fuel Tank Capacity:** 70L

**Number Of Gears:** 6 SPEED

**Top Speed:** 90MPH

**Engine Power BHP:** 100.6BHP

automatic lights - Dispatch, Visible VIN at windscreen base