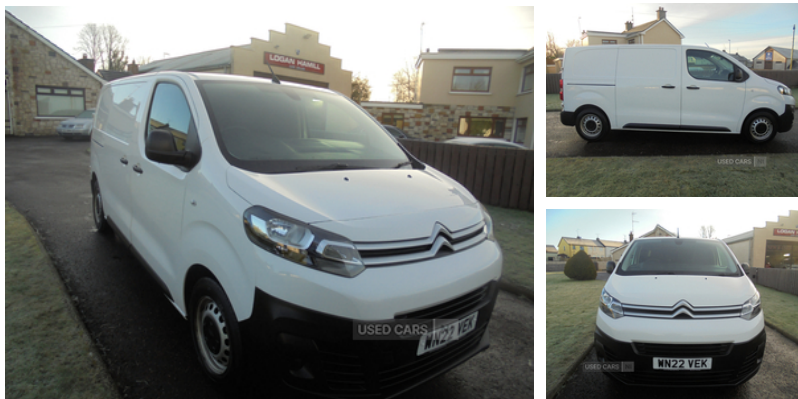


Citroen Dispatch 1000 1.5 BlueHDi 100 Van Enterprise Pro | 2022

£11,950 + VAT



Vehicle Features

2 speed intermittent front wipers, 6 load tie-down hooks in cargo area, 12V socket in cabin, 12V socket in cargo area, Acoustic vehicle alerting system, Automatic fuel cut off & door unlocking, Battery charge warning, Black door mirrors, Closed upper and open lower gloveboxes, Cup holders for driver and passenger in top of dashboard, Dashboard mounted central locking push button and auto locking above 7mph, Dashboard storage areas, Door opening warning and audible lights on warning, Driver and passenger sun visors, EBA and EBFD, Electric front windows with one touch & anti pinch function, Electronic Stability Control and ABS with hill start assist, folding table in central seat, foldup outer seat, Front door pockets with 1.5L bottle holder, Front windows tinted to 30 percentage opacity, Handbrake grip + gaiter in leather, Hard plastic floor protection in cabin, Height-adjustable 3-point pre-tensioner seat belts with force limiter, Height adj drivers seat with lumbar adj & armrest, Height adjustable halogen headlights, Height adjustable head restraints for driver and front passengers seats, Height and reach adjustable steering wheel, High level third brake light, Laminated acoustic windscreen, Large courtesy lights, Load compartment interior light, Map reading lights in roof console, Mica cloth/Vinyl upholstery, Moduwork - Dual passenger seat, Multi-function on-board trip computer, Oil level warning light, Outside temperature gauge, PAS, Perimeter and volumetric thatcham category 1 approved alarm, Preparation for towbar-wiring and connector for towbar interface, Remote central locking with deadlocking, Remote temperature pre-conditioning, Rev counter with maintenance and gear efficiency indicators (GEI), Reversing lights, Rolling code transponder immobiliser, selective cab and load area locking via 3 button plip remote control key, Side indicator warning, Speedometer with digital odometer and digital trip recorder, Storage under squab of central passenger seat, Twin rear headrests, Twin sliding side doors, under seat storage, Unfastened seat belt warning for driver and front passengers, Visibility Pack with automatic lights

Miles: 52653

Fuel Type: Diesel

Transmission: Manual

Colour: White

Engine Size: 1500

CO2 Emission: 174

Tax Band:
Light goods vehicle (£345 p/a)

Body Style: Van

Reg: WN22VEK

Technical Specs

DIMENSIONS

Length: 4959mm

Width: 1920mm

Height: 1899mm

Seats: 3

Luggage Capacity (Seats Up):

Not AvailableL

Gross Weight: 2695KG

PERFORMANCE & ECONOMY

Fuel Consum. (Urban Cold): 54.3MPG

Fuel Consum. (Extra Urban): 76.4MPG

Fuel Consum. (Combined): 45.6MPG

Fuel Tank Capacity: 70L

Number Of Gears: 6 SPEED

Top Speed: 90MPH

Engine Power BHP: 100.6BHP

- Dispatch, Visible VIN at windscreen base